



**Snehdeep Precision**

**SNEHDEEP PRECISION COMPONENTS PRIVATE LIMITED**

**255A, Jyotibanagar, Opp. National Weigh Bridge**

**Talawade, Pune – 411 062**

# HISTORIC OVERVIEW

1996

Established with  
name  
Snehdeep CNC  
House

Converted to private  
limited  
company

2005

2014

Rechristened as  
Snehdeep Precision  
Components  
Private Limited

# PERSONNEL



## **Arun Endait (Managing Director)**

- 18 Years of job experience with Tata Motors
- 21 years of experience in management role
- Responsible for Sourcing, NPD, Planning & Production Control

## **Asha Endait (Managing Director)**

- 11 years of experience in Indian SME taxation
- Responsible for labour relations, financial management and taxations



# LIST OF MACHINES AND EQUIPMENTS

## HMCs

<b>Manufacturer</b>	<b>Model</b>	<b>Table Size</b>	<b>Magazine size</b>	<b>X,Y &amp; Z axes</b>
<b>BFW</b>	<b>MPH 650</b>	<b>630 x 630 mm</b>	<b>60 tools</b>	<b>900 x 860 x 630</b>
<b>BFW</b>	<b>MPH 500</b>	<b>500 x 500 mm</b>	<b>40 tools</b>	<b>700 x 560 x 560</b>
<b>BFW</b>	<b>Prima 65</b>	<b>800 x 630 mm</b>	<b>60 tools</b>	<b>1000 x 850 x 900</b>
<b>BFW</b>	<b>Prima 65</b>	<b>800 x 630 mm</b>	<b>60 tools</b>	<b>1000 x 850 x 900</b>
<b>Toshiba</b>	<b>BMC 8B</b>	<b>800 x 800 mm</b>	<b>30 tools</b>	<b>1000 x 800 x 800</b>

# LIST OF MACHINES AND EQUIPMENTS



## CNCs

<b>Manufacturer</b>	<b>Model</b>	<b>Chuck Dia</b>	<b>Max Turning Length</b>	<b>Quantity</b>
<b>ACE Designers</b>	<b>Jobber XL</b>	<b>200 mm</b>	<b>400 mm</b>	<b>1 No.</b>
<b>ACE Designers</b>	<b>Jobber XL</b>	<b>200 mm</b>	<b>400 mm</b>	<b>1 No.</b>
<b>ACE Designers</b>	<b>Jobber LM</b>	<b>200 mm</b>	<b>400 mm</b>	<b>1 No.</b>
<b>LMW</b>	<b>Pilatus 15T</b>	<b>200 mm</b>	<b>400 mm</b>	<b>1 No.</b>
<b>PMT</b>	<b>Supercut 6</b>	<b>160 mm</b>	<b>600 mm</b>	<b>1 No.</b>

# LIST OF MACHINES AND EQUIPMENTS

## Other Conventional

- Radial Drill – 1 No.
- Center Lathe – 1 No.
- Pillar Drill – 1 No.
- Bench Grinder – 2 No.
- Hydraulic Pallet Truck & Hydraulic Stacker
- Jib Arm Crane – with 3 tonne hoist – 1 No.
- Jib Arm Crane – with chain pulley block – 2 Nos.
- Air Compressors – 4 Nos
- Air Dryers – 4 Nos
- DG Set – 83 KVA (Atlas Copco make)

# LIST OF MEASURING AIDS

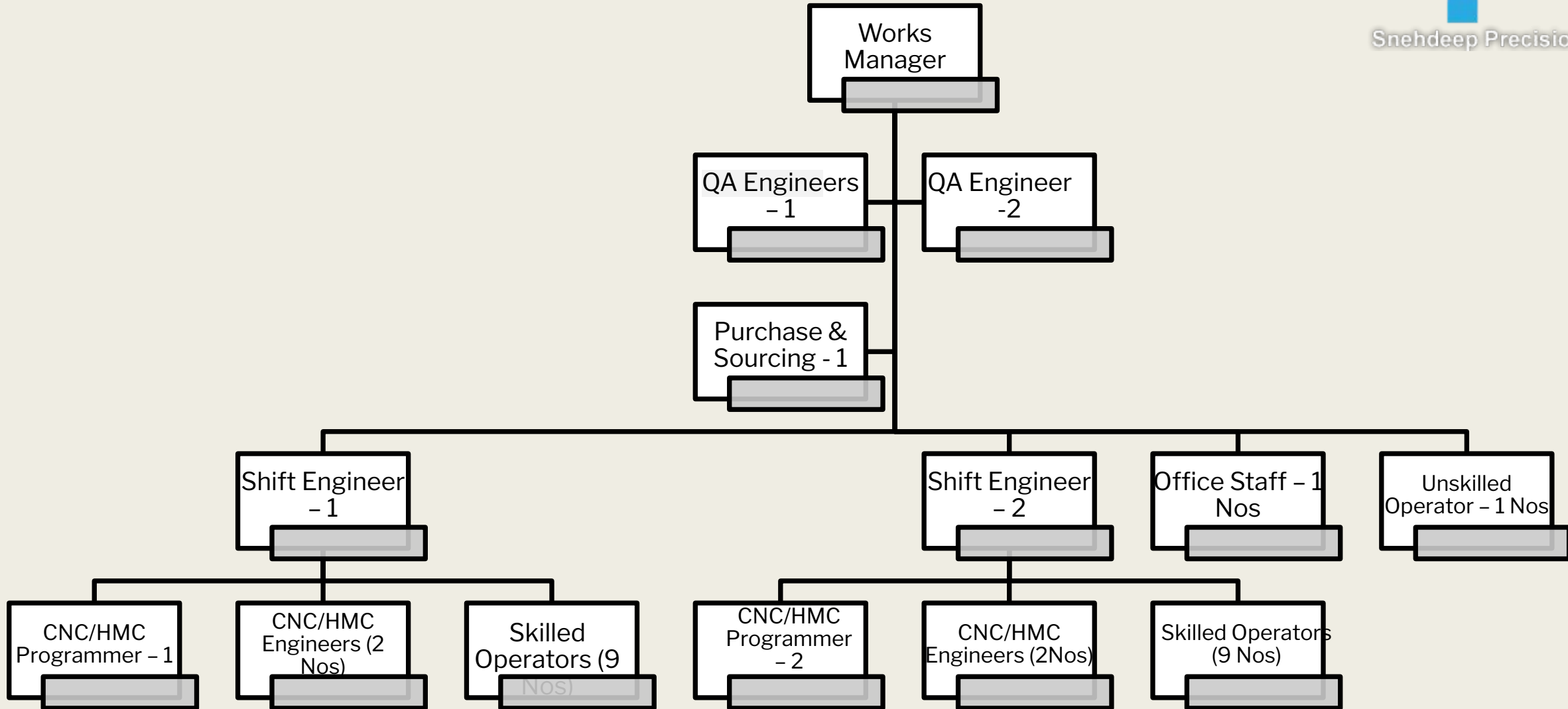
- **CMM(Co-ordinate Measuring Machine) – Zeiss make, Model Spectrum-II, X,Y,Z = 700 x 1000 x 600 mm**
- **2D Measuring Height** - Mitutoyo Make, Model LH600
- **Surface Roughness Tester** - Mitutoyo make, Model- ST 201P
- **Tool Presetter** – Optimech Make
- **Micrometers** – From Range 0 to 250 mm
- **Vernier Calipers ( Dial, Digital, normal)** – From Range 0 to 500 mm
- **Bore Gauges** – From Range 0 to 300 mm

# LIST OF MEASURING AIDS

- Bench Center, Surface plates (Granite & CI), Dial stands, V Blocks etc. etc. required accessories for day to day inspection.
- Various Thread Plug & Ring Gauges, Plain Plug & Ring Gauges, Slip Gauges, Snap Gauges etc.
- Several types of Special Cutting Tools, Special inspection fixtures, Form cutters, Form Tools etc.
- Jigs & Fixtures for @ 30 varieties of components.



# HUMAN RESOURCES



**Total Manpower: 32 Nos**

# EXPANSION PROGRAM

- Propose to shift to MIDC Chakan, with 20,000 Sq. feet plot & 10,000 Sq. feet Shed to facilitate better services to our customers.
- To work on Export Business & to add machining facilities related to that business & also for present customers.
- Setting up New HMCs & Honing machine for catering requirements of Additional/New components for Atlas Copco Chakan unit.
- To accelerate the activity of New Project, Shed near existing unit to be taken on Rent basis. For that primary discussion already done with owner of shed.

# OUR MAJOR CUSTOMERS

- Atlas Copco (I) Ltd., CT Div. Dapodi, Pune
- Atlas Copco (I) Ltd., HPT Div. Chakan, Dist- Pune
- Epiroc Mining India Ltd., Nashik
- Aicon Castalloy Ltd., Shikrapur, Pune
- Atlas Castalloy Ltd., Chinchwad, Pune
- Emerson Process management ( formerly known as Virgo Valves & Control ), Pune
- Premier Transmission Ltd., Chinchwad, Pune

# QUALITY POLICY & OBJECTIVE



## **POLICY**

---

We, at Snehdeep Precision Components Pvt. Ltd., are committed for Customer's total satisfaction. We supply on-time Excellent quality precision components at optimum cost. We achieved our quality objectives through training & motivation of the employees and continual improvement in Quality Management System.

## **OBJECTIVES**

---

- On-time product delivery to Customers
- Reduce Customer complaints.
- Reduce In-house Rework & Rejection.
- Reduce Machine Break down.
- Increase Sales Turnover.
- Increase Customer Satisfaction Index.
- Training to Employees.
- Increase Supplier Rating.

# BFW MAKE HMCS MAXPRO 650, MAXPRO 500 & PRIMA 65



# ZEISS CMM SPECTRUM II & MITUTOYO MAKE 2 D MEASURING HEIGHT GAUGE



# CNC LATHES – ACE DESIGNERS MAKE, JOBBER LM & JOBBER XL



# CONTACT US

**Arun Endait** (Managing Director)

9371032988

[arun.endait@snehdeepprecision.com](mailto:arun.endait@snehdeepprecision.com)

**Asha Endait** (Managing Director)

9595452988

[asha.endait@snehdeepprecision.com](mailto:asha.endait@snehdeepprecision.com)



THANK YOU